

GENETIC FACTORS AFFECTING DIABETES

1. Obesity
2. Insulin Resistance
3. Exercise Responsiveness
4. Diabetes Prevention

Genetics of a person can be both, Cause and Solution for Diabetes.

GENE BASED DIABETES MANAGEMENT COMPRISES

1. Detailed genetic analysis
2. Detailed diet and lifestyle advice using genetic report
3. Thorough three months diet and lifestyle program
4. Comprehensive advice on :
 - L diabetes management
 - Nutrition required
 - Right choice of exercise

DID YOU KNOW?

Solutions to your stubborn diabetes lies in your own genes.



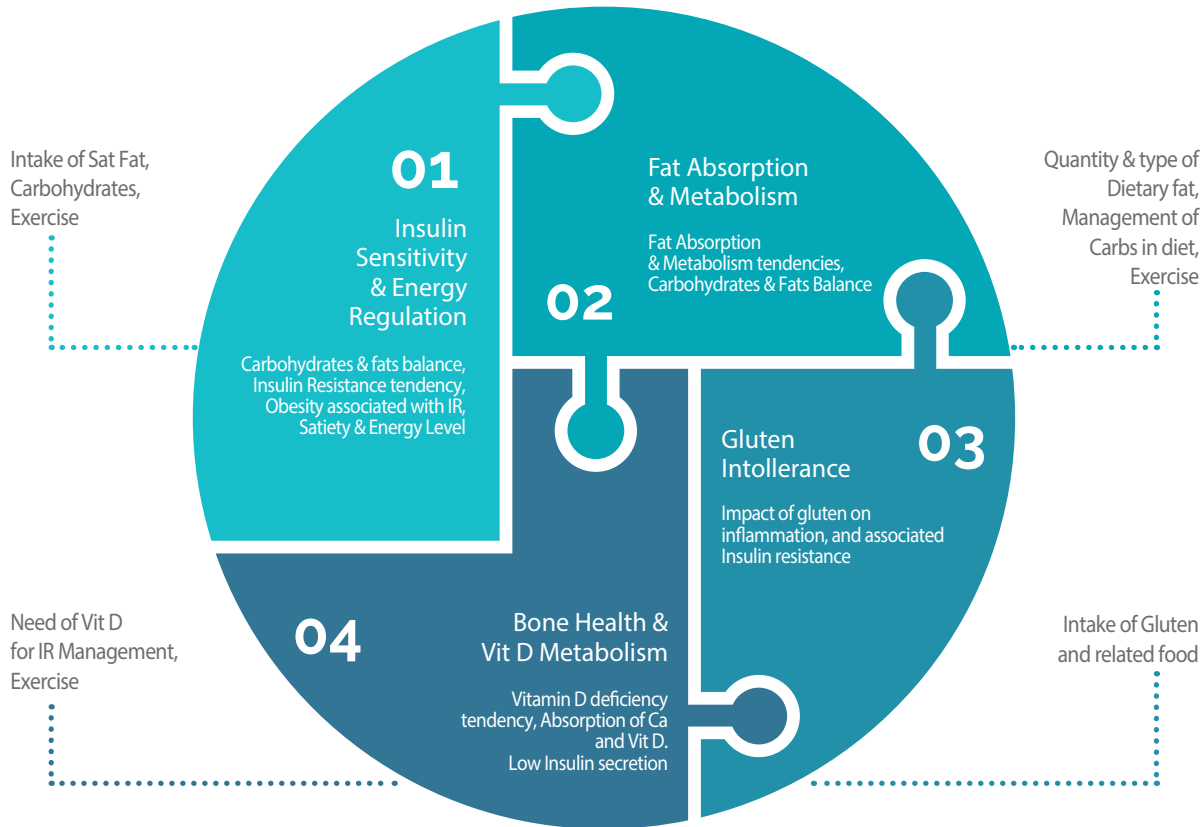
DIABETES & GENES

Take a step towards your...

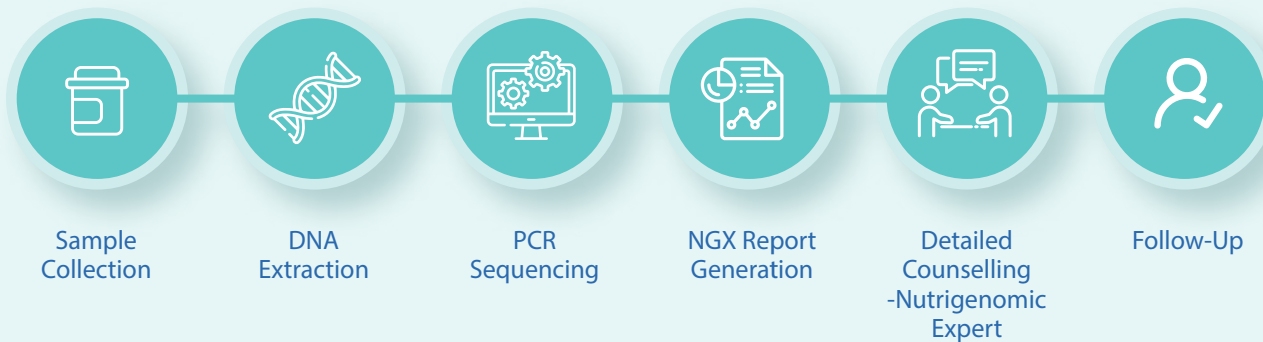
DIABETIC HEALTH



DIABETIC NUTRIGENOMIC PANEL



PROCESS AND STEPS IN DIABETIC HEALTH MANAGEMENT



Genomic Tests Used In Diabetology

Molecular Diagnostics (MDS)

Real Time PCR (RT - PCR)

Karyotyping

PCR- Gene Sequencing

Next generation sequencing (NGS)

Type of Tests Used In Diabetology

Name	Category	Significance	TAT
Metformin Sensitivity	Pharmaco Genomics (PGX)	Determining Metformin responsiveness	12 d
Warfarin Sensitivity	Real Time-PCR (RT - PCR)	Determining Warfarin responsiveness	7 d
Clopidogrel Sensitivity	PCR Sequencing (PCR - Seq)	Determining Clopidogrel responsiveness	7 d
Heart Health + Nutrigenomics	Next Generation Sequencing (NGS)	Management of diabetic health and obesity	21 d